

January 5, 2020

Leadership Meeting

Agenda

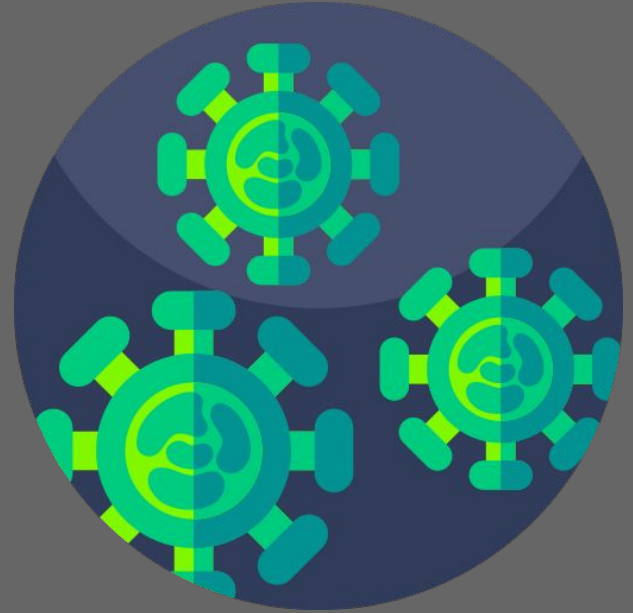
- Soft Opening
- What Need to Be Done?
- Finances
- Fundraising

Reminders:



Showing up at TheLab?

- Wear a mask
- Wash yo' hands
- Use hand sanitizer
- Use mouthwash
- Stay home if you have any symptoms of being sick I don't even care if it's COVID. We don't want the flu or a cold, yo.



We're Open! (Softly.)



TheLab.ms is open!

Please thank all the volunteers who have been working tirelessly to get things up and running!

Some equipment is still not set up, we welcome volunteers! (See: #the_move)

Classes *may possibly* be held in a **LIMITED** capacity. (i.e. must be social distanced, and health protocols followed)

Grand Opening - Feb 1st



- Press Release
 - Press - Where is final copy?
 - Release - Plano Mag, Community Profile
- Coordinate
 - Mayor wants to turn pen to sign proclamation
 - Coordinate with Charlie
 - Coordinate with Doug / CoR
- Announce
 - Meetup, FB, Twitter

Soooo what needs to be done?



We have an answer for that!

Join [#the_move](#) on Slack, there is a [Trello board](#) with allllll* the things we need to do to get the space spiffy and working.

**not really all, we'll never find all the things to do*



Treasurer Change of Hands



Our beloved treasurer has an awesome new job and is super busy, so we need a new one!

As per the ByLaws, the board is appointing and voting on a treasurer until the Annual Meeting in June.



Board Vote on Treasurer

New Portal, Who Dis?



Thanks to the efforts of @tommy and @Phunkmaster, we have a brand-spankin'-new membership portal. We are beholden to no man! (Except maybe our CTO, but he's not Paypal so we cool.)

- **Manage** your membership levels!
- **Donate** funds!
- **See** your membership points!
- **AND MORE!**

Instructions on how to migrate your account are here:

<https://kb.thelab.ms/display/THELAB/How+to+Migrate+to+members+portal>

Membership Rates



NEW Membership Rates are in effect! People who were in good standing before Dec. 31, congrats, you are now Plankholders.

A new LIMITED number of Lifetime Memberships are available to celebrate the new space! Once they're gone, they're GONE.

For more info, check out <http://join.thelab.ms>



Money money money



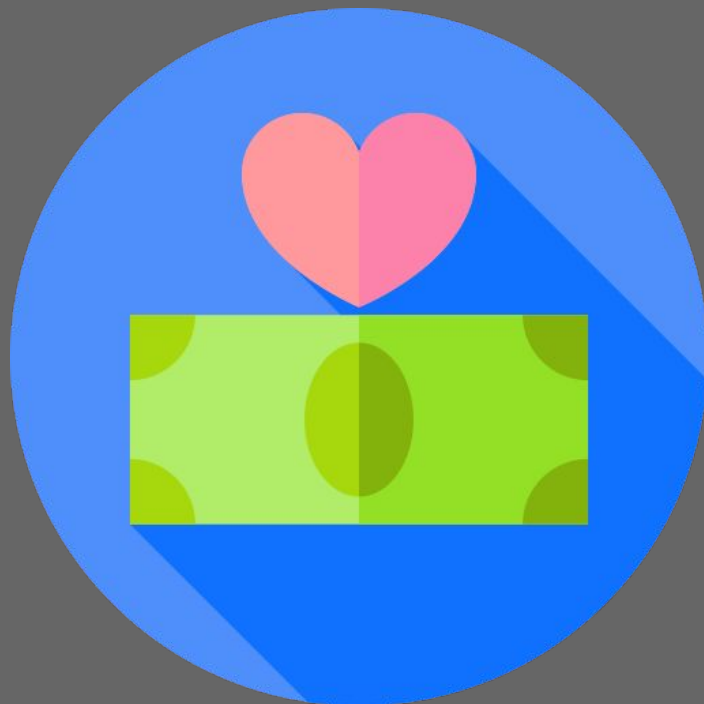
- How do current funds look? @_Luke
- Link to current financials [is here](#).



#fundraising



- @lego heading up our fundraising auction!
- We need donations to auction off:
 - Private Classes
 - Items you've made
 - Training Sessions
 - Merch from local companies
 - Merch from your supportive company
- [Go here to sign up!](#)
- [Click here for the flyer!](#)



Social Media



We've actually been doing lots of posts!

Are you on the Facebooks? Share our posts! Are you on the Tweeter? Retweet us!

To appease the almighty algorithm, we must interact! Pretend you're a coronavirus and spread to as many people as possible!

Reach out to @tommy if you're interested in our social media presence



People Who Are Super



Holy cow we have some awesome members at TheLab.

Nominations for Membership Points?



Membership Meeting

Possibly to be continued on Slack.